



Acton Lane, London, NW10 7AL

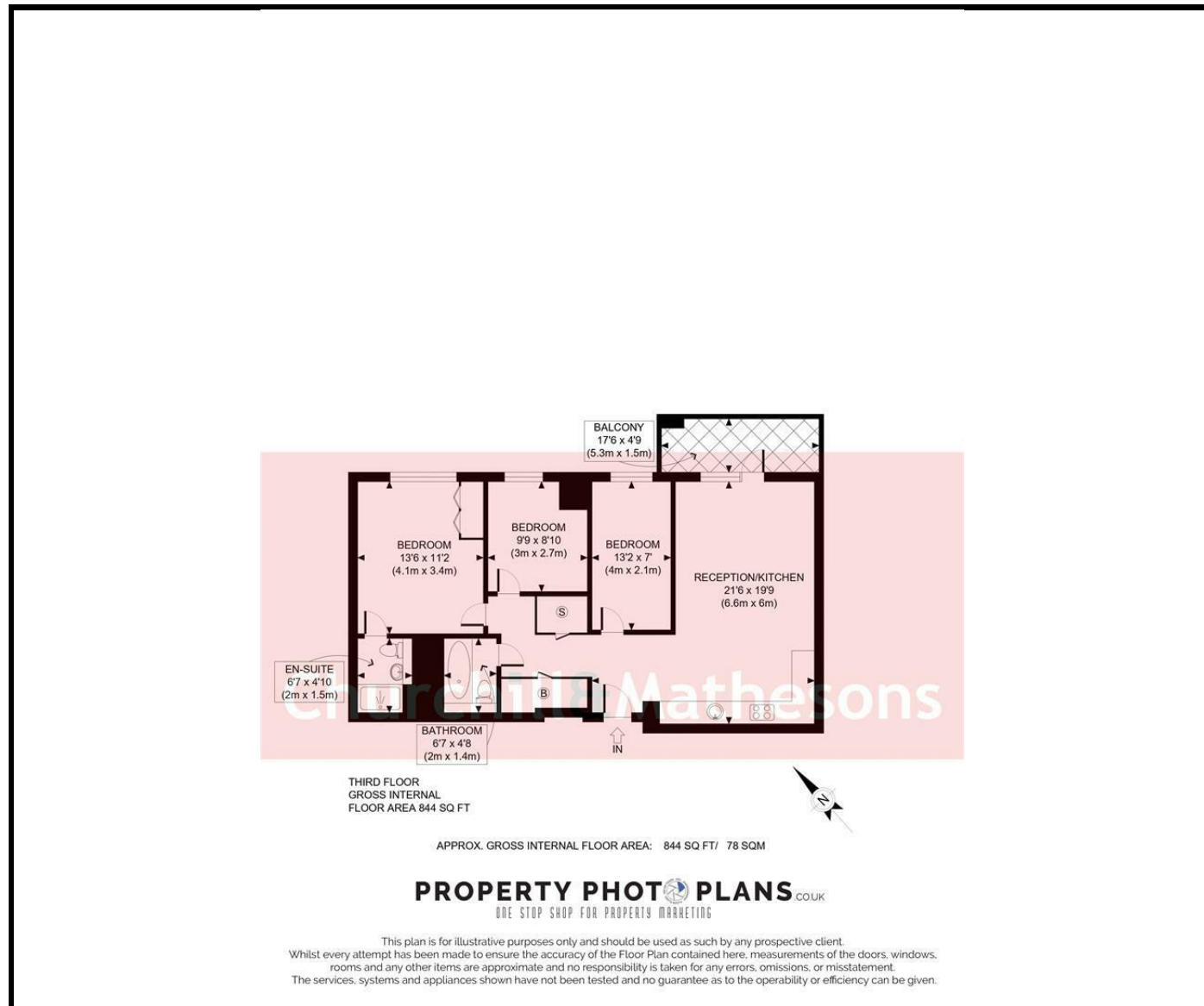
£576 Per Week



KEY FEATURES:

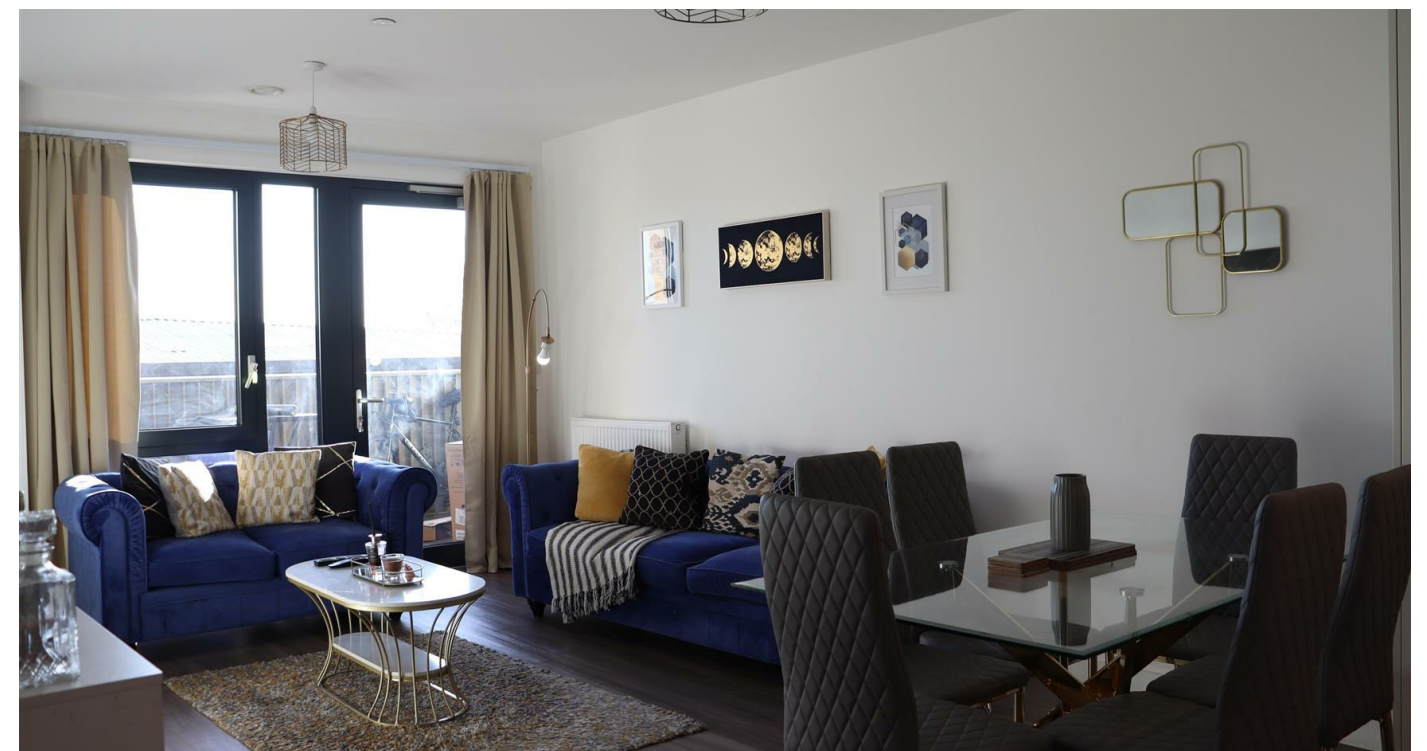
- Newly Built 3 bedroom apartment
- Modern fully fitted kitchen with integrated appliances including Dishwasher
- Spacious bedrooms with built in Wardrobes
- Located close to West Acton station, Harlesden station and Acton Main Line
- FURNISHED ~ AVAILABLE NOW

Newly Built 3 bedroom apartment
* Modern fully fitted kitchen with integrated appliances including Dishwasher
* Open plan reception with private Balcony
* Spacious bedrooms with built in Wardrobes
* Stylish fully tiled bathrooms
* Ensuite room
* Video Entryphone System
Located close to West Acton (Central Line), Harlesden (Bakerloo Line), and Acton Main Line (Elizabeth Line)
FURNISHED ~ AVAILABLE NOW
COUNCIL TAX BAND - E
EPC rating - B



Energy Efficiency Rating		Current	Potential
Very energy efficient - lower running costs			
(92 plus) A			
(81-91) B		86	86
(69-80) C			
(55-68) D			
(39-54) E			
(21-38) F			
(1-20) G			
Not energy efficient - higher running costs			
England & Wales	EU Directive 2002/91/EC		

Environmental Impact (CO ₂) Rating		Current	Potential
Very environmentally friendly - lower CO ₂ emissions			
(92 plus) A			
(81-91) B			
(69-80) C			
(55-68) D			
(39-54) E			
(21-38) F			
(1-20) G			
Not environmentally friendly - higher CO ₂ emissions			
England & Wales	EU Directive 2002/91/EC		



Whilst every effort is made to give a fair description, the accuracy of these particulars is not guaranteed, neither do they constitute an offer or contract.

CHURCHILL & MATHESONS ESTATE AGENTS have not tested any apparatus, equipment, fitting or services and so cannot verify that they are in working order. The buyer is advised to obtain verification from their solicitor or surveyor. Measurements are correct to within +/-6 A sonic tape is used. None of the statements contained in these particulars or any of our properties are to be relied upon as a representation of fact.